

Steck- & Dehnungsmuffe, Festpunktausführung

- mit EPDM Lippendichtung System 3S, Trinkwasserqualität

optional: Lippendichtung aus NBR; ohne Schellensitz

Achtung: Schelle darf keine radiale Kraft auf das Formteil ausüben!

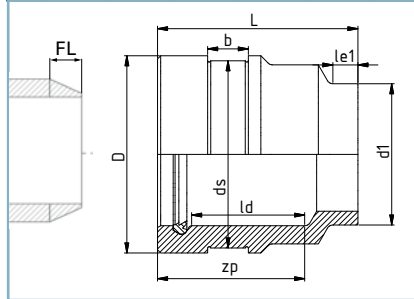
Joining & expansion socket, fixed point type

- with EPDM lip seal, system 3S, drinking water quality

optional: NBR lip seal; without clamp

Attention: Clamp may not exert a radial force on the fitting!

2025 #1 | SMC



Rohr ist mit einer 15 ° Fase anzuschärfen
Pipe has to be chamfered with 15 ° chamfer

SDR ≥ 41 33 26 21 17,6 **17** 13,6 11 9 7,4 6 ≤ 5

| d_1 | FL | l_{e1} | z_p | d_s | b | Schelle Clamp | l_d | D | L | Gewicht weight kg | Euro/Stck. Euro/pc. PE 100 |
|-------|----|----------|-------|-------|----|------------------|-------|-----|-----|-------------------------|----------------------------------|
| 63 | 10 | 30 | 180 | 77 | 45 | 77x40* | 135 | 89 | 230 | 0,5 | |
| 75 | 10 | 30 | 185 | 89 | 45 | 89x40* | 140 | 110 | 235 | 0,7 | |
| 90 | 10 | 30 | 188 | 108 | 55 | 108x50* | 140 | 125 | 245 | 1 | |
| 110 | 10 | 30 | 190 | 133 | 55 | 133x50* | 145 | 150 | 250 | 1,1 | |
| 125 | 10 | 30 | 195 | 154 | 55 | 154x50** | 145 | 165 | 255 | 1,4 | |
| 140 | 10 | 30 | 195 | 169 | 55 | 169x50* | 145 | 185 | 255 | 1,9 | |
| 160 | 10 | 30 | 195 | 194 | 55 | 194x50* | 145 | 210 | 255 | 2,1 | |
| 180 | 15 | 30 | 195 | 216 | 55 | 216x50* | 145 | 232 | 260 | 2,7 | |
| 200 | 15 | 40 | 210 | 245 | 65 | 245x60** | 155 | 260 | 280 | 3,4 | |
| 225 | 15 | 40 | 235 | 267 | 65 | 267x60* | 180 | 283 | 310 | 4,3 | |
| 250 | 20 | 40 | 235 | 305 | 65 | 305x60** | 180 | 320 | 310 | 5,8 | |
| 280 | 20 | 40 | 240 | 324 | 65 | 324x60* | 180 | 345 | 320 | 7,1 | |
| 315 | 20 | 40 | 260 | 368 | 65 | 368x60* | 195 | 385 | 340 | 9,4 | |
| 355 | 20 | 40 | 265 | 407 | 75 | 407x70* | 195 | 430 | 350 | 11,9 | |
| 400 | 20 | 40 | 280 | 457 | 75 | 457x70** | 205 | 485 | 380 | 16,2 | |
| 450 | 20 | 40 | 295 | 508 | 75 | 508x70* | 220 | 545 | 390 | 19,3 | |
| 500 | 20 | 40 | 305 | 575 | 75 | 575x70*** | 230 | 610 | 400 | 26,2 | |
| 560 | 20 | 40 | 320 | 640 | 75 | 640x70*** | 240 | 680 | 430 | 31,9 | |
| 630 | 20 | 40 | 350 | 720 | 75 | 720x70*** | 260 | 755 | 455 | 44,6 | |

*DIN 3567 **ähnlich DIN 3567 ***Sonderschelle
*DIN 3567 **similar to DIN 3567 ***special clamp

Steck- & Dehnungsmuffe, Festpunktausführung

- mit EPDM Lippendichtung System 3S, Trinkwasserqualität

optional: Lippendichtung aus NBR; ohne Schellensitz

Achtung: Schelle darf keine radiale Kraft auf das Formteil ausüben!

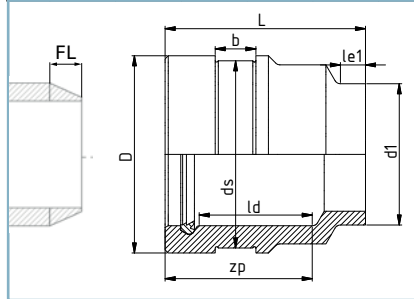
Joining & expansion socket, fixed point type

- with EPDM lip seal, system 3S, drinking water quality

optional: NBR lip seal; without clamp

Attention: Clamp may not exert a radial force on the fitting!

2025#1 | SMC



Rohr ist mit einer 15 ° Fase anzuschärfen
Pipe has to be chamfered with 15 ° chamfer

SDR ≥ 41 33 26 21 17,6 17 13,6 **11** 9 7,4 6 ≤ 5

| d_1 | FL | l_{e1} | z_p | d_s | b | Schelle Clamp | l_d | D | L | Gewicht weight kg | Euro/Stck. Euro/pc. PE 100 |
|-------|----|----------|-------|-------|----|------------------|-------|-----|-----|-------------------------|----------------------------------|
| 63 | 10 | 30 | 180 | 82 | 45 | 82x40** | 135 | 96 | 230 | 0,5 | |
| 75 | 10 | 30 | 185 | 95 | 45 | 95x40** | 140 | 115 | 235 | 0,7 | |
| 90 | 10 | 30 | 188 | 115 | 55 | 115x50* | 140 | 131 | 245 | 1 | |
| 110 | 10 | 30 | 190 | 144 | 55 | 140x50* | 145 | 155 | 250 | 1,8 | |
| 125 | 10 | 30 | 195 | 159 | 55 | 159x50* | 145 | 175 | 255 | 2,3 | |
| 140 | 10 | 30 | 195 | 184 | 55 | 184x50** | 145 | 200 | 260 | 3 | |
| 160 | 10 | 40 | 195 | 204 | 55 | 204x50** | 145 | 220 | 270 | 3,7 | |
| 180 | 15 | 40 | 195 | 245 | 65 | 245x60** | 145 | 260 | 275 | 4,7 | |
| 200 | 15 | 40 | 210 | 254 | 65 | 254x60** | 155 | 270 | 290 | 5,8 | |
| 225 | 15 | 40 | 235 | 299 | 65 | 299x60** | 180 | 315 | 320 | 8,3 | |
| 250 | 20 | 40 | 235 | 318 | 65 | 318x60* | 180 | 334 | 330 | 10,7 | |
| 280 | 20 | 40 | 240 | 356 | 65 | 356x60* | 180 | 372 | 340 | 14 | |
| 315 | 20 | 40 | 260 | 407 | 75 | 407x70* | 195 | 427 | 355 | 15,3 | |
| 355 | 20 | 40 | 265 | 457 | 75 | 457x70** | 195 | 477 | 370 | 21,1 | |
| 400 | 20 | 40 | 280 | 508 | 75 | 508x70* | 205 | 528 | 390 | 27,8 | |
| 450 | 20 | 40 | 295 | 555 | 75 | 555x70*** | 220 | 585 | 410 | 34 | |
| 500 | 20 | 40 | 305 | 620 | 75 | 620x70*** | 230 | 645 | 425 | 45,6 | |
| 560 | 20 | 40 | 320 | 690 | 75 | 690x70*** | 240 | 720 | 450 | 56,4 | |
| 630 | 20 | 40 | 350 | 780 | 75 | 780x70*** | 260 | 805 | 490 | 78,2 | |

*DIN 3567 **ähnlich DIN 3567 ***Sonderschelle
*DIN 3567 ** similar to DIN 3567 ***special clamp